



1) Open employee beverage in kitchen 136a



2) Oysters stored out of original container 159a



3) Raw chicken stored over cooked potatoes 173a



4) Raw chicken over cooked potatoes 173a

9) Knife between makestation & table
234a3



10) Ice scoop stored on top of ice machine 234a3



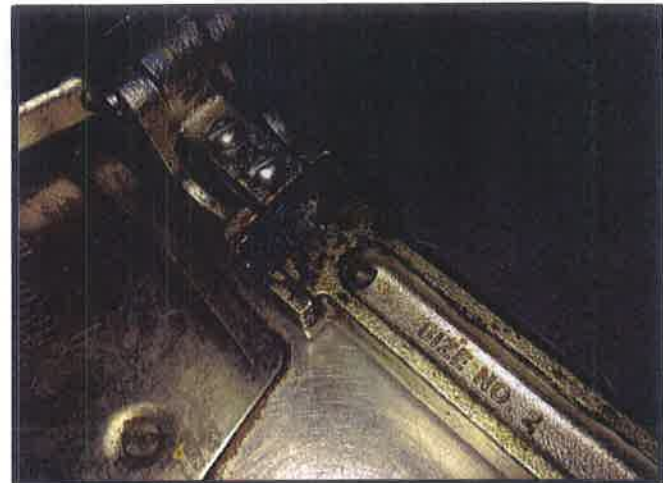
11) Rice paddle stored in still water 234a6



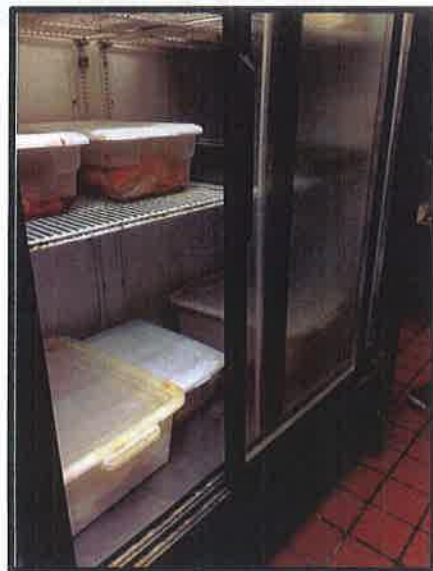
12) Old food debris in clean utensil bin 239a1



17) Can opener blade soiled with black greasy residue 295a



18) Can opener blade soiled with black greasy residue 295a



19) Doors of the Aquafina cooler with accumulated debris at the cook's line 295c



20) Door tracks of the Aquafina cooler with accumulated old food debris 295c



25) Crock pot (butter) exterior encrusted with old greasy residue 295c



26) Crock pot (garlic butter) exterior encrusted with old greasy residue 295c



27) Food scale on prep table at cook's line with encrusted old food debris 295c



32) Exterior handle and side of the breeding station flour bin encrusted with old food debris 295c



33) Exterior of the flour storage bin underneath the breeding station with old food debris 295c



34) Grease accumulated on the side of the fryer 295c



35) Grease accumulated on the side of the fryer 295c



39) Interior of the microwave with old food spillage 298a



40) Interior door of the microwave with old food spillage 298a



41) Hand sink by dishwashing area completely blocked, unable to use and lacking hand soap at the dispenser 344a & 346a



42) Metal scrub pad in the basin of the cook's line hand sink 344a



47) Grease accumulated surrounding the grease storage receptacle 395b



49) Accumulated food and grease on floors under fryer area 431a

48) Back door to establishment propped open 413a



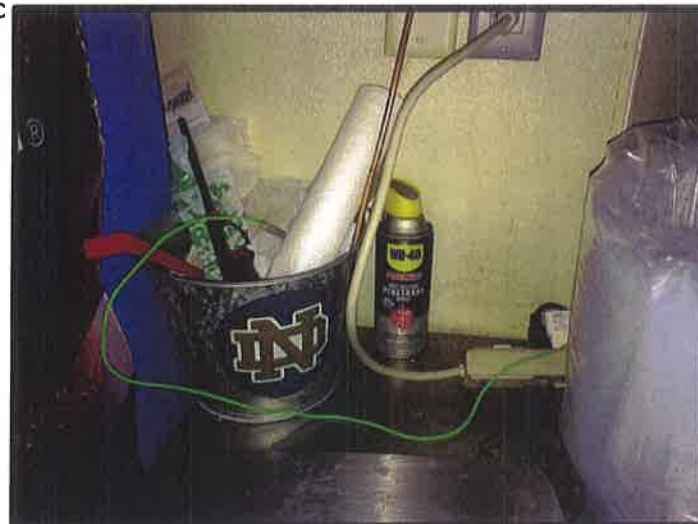
50) Brown liquid pooling under shelving units in walk in cooler and spillage on cooler shelf 431a





55) Food debris and used utensils on shelving unit in dry storage area 295c

56) Floor and shelving in dry storage area with accumulated food debris 431a



57) Chemical stored on prep table at cook's line 439a